

True Warehouse Sale

Pratts
FOOD SERVICE
A Family Company Since 1910

**TRUE Loyalty Points:
Earn Points
Save On Your Purchases**

Pricing Effective:
February 24th - March 24th, 2017
(Or While Qty's Last)

Buy Rent Lease

We offer it all!!
Approximate rate based on
3 years & taxes extra and
monthly payment

Lease & Rentals rates shown are approximations only!
Rent and Lease contracts subject to credit approval!

**TRUE COOLER 1 DR
GLASS (GDM-19T-HC-LD)
WHITE**
1/1's - **#395848**
Web Price: \$2,596.10
Loyalty Points Value: 477
YOUR PRICE: \$

lease 36 month term
"taxes extra"
\$83.70

Rent 52 week term
"taxes extra"
\$24.44



one section, (4) shelves, laminated vinyl exterior, white interior with stainless steel floor, (1) Low E thermal glass hinged door, LED interior lights, bottom mounted self contained refrigeration, R290 Hydrocarbon refrigerant, 1/3 HP, 115v/60/1, 5.4 amps, 9' cord, NEMA 5 15P, cULus, NSF, CE, MADE IN USA Self contained refrigeration standard Warranty 5 year compressor (self contained only Warranty 3 year parts and labor Door hinged right standard Exterior: Permanent non peel non chip white vinyl. White aluminum, standard

**TRUE COOLER 2 DR
GLASS (GDM-41-HC-LD)
WHITE L.E.D**
1/1's - **#311514**
Web Price: \$3,546.56
Loyalty Points Value: 1547
YOUR PRICE: \$

lease 36 month term
"taxes extra"
\$78.96

Rent 52 week term
"taxes extra"
\$23.06

Refrigerated Merchandiser, two-section, (8) shelves, white laminated vinyl exterior, white interior with stainless steel floor, (2) Low-E thermal glass sliding doors, LED interior lights, leg levelers, 1/3 HP, 115v/60/1-ph, 6.2 amps, 9' cord, NEMA 5-15P, ENERGY STAR®, MADE IN USA

Overall Dimensions:
Left to Right: 47 1/8"
Front to Back: 29 5/8"
Height: 78 5/8"



Pratts **Pratts**
FOOD SERVICE WHOLESALE
A Family Company Since 1910 A Family Company Since 1910

**We are unable to publish any pricing other than prices shown.
Give us a call ASAP and see what we can do for you!**

STOCK IS LIMITED - All Items Are On A First Come First Serve Basis

Pricing In Effect For Goods Delivered On Or Before March 24th, 2017

Pricing Subject to Availability - No Rain Checks

Once Stock is out, re-orders MAY NOT be at advertised prices. All Pricing Subject to Change

ALBERTA • SASKATCHEWAN • MANITOBA • NW ONTARIO • THUNDER BAY • NUNAVUT • NW TERRITORIES • YUKON TERRITORIES

Glass Door Cooler Merchandisers

TRUE FREEZER 1 DR GLASS LEFT HINGE (GDM-23F-HC-LD) WHITE

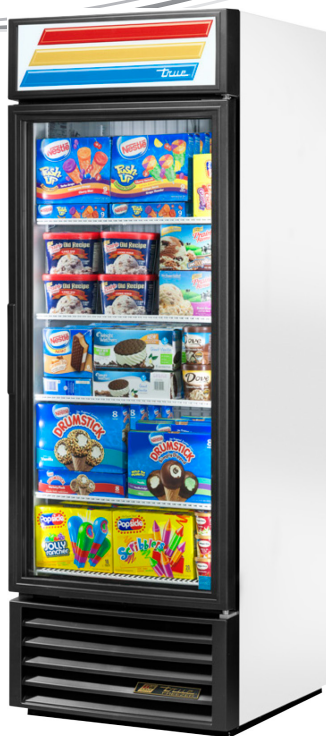
1/each - #195701
Web Price: \$5,164.29

Loyalty Points
Value: 1485
YOUR PRICE: \$

lease 36 month term
"taxes extra"
\$145.35

Rent 52 week term
"taxes extra"
\$42.44

Triple pane thermal insulated glass door assembly with extruded aluminum frame. Oversized, factory balanced, refrigeration system holds -10°F (-23.3°C). Ideal for ice cream and frozen food products. Self closing door. Positive seal, torsion type closure system. Triple pane thermal glass door assembly with extruded aluminum frame. LED interior lighting provides more even lighting throughout the cabinet. Safety shielded. Entire cabinet structure is foamed-in-place using Ecomate. Four (4) adjustable, heavy duty PVC coated wire shelves 22 7/8" L x 21 1/4" D (582 mm x 540 mm). Four (4) chrome plated shelf clips included per shelf. Automatic defrost system time-initiated, temperature-terminated. Saves energy and provides shortest possible defrost cycle.



TRUE COOLER 3 DR GLASS (GDM-69-LD) WHITE

1/69cft - #355867
Web Price: \$5,116.40

Loyalty Points
Value: 1147
YOUR PRICE: \$

lease 36 month term
"taxes extra"
\$156.77

Rent 52 week term
"taxes extra"
\$45.79

69 cubic foot three section glass door merchandiser refrigerator comes with 12 adjustable vinyl-coated shelves. Three sliding, "Low-E" double pane glass door assemblies conserve energy, and is self closing. Holds a consistent temperature of 33 to 38 degrees. This bottom mount design raises the level of the bottom shelf to better display your products. Easy to clean laminated exterior cabinet. 78 1/8" W x 29 7/8" D x 79 3/8" H. Energy efficiency requires a 115V electrical connection, and is UL, CE, and NSF Listed.



TRUE 2 DR COOLER BLACK (GDM-41-HC-LD)

1/each - #329458
Web Price: \$3,546.56

Loyalty Points Value: 1518
YOUR PRICE: \$

lease 36 month term
"taxes extra"
\$80.14

Rent 52 week term
"taxes extra"
\$23.41

The world's #1 manufacturer of glass door merchandisers. Factory engineered, self-contained, capillary tube system using environmentally friendly R290 hydro carbon refrigerant that has zero (0) ozone depletion potential (ODP), & three (3) global warming potential (GWP). High capacity, factory balanced refrigeration system that maintains cabinet temperatures of 33°F to 38°F (.5°C to 3.3°C) for the best in food preservation. Exterior - non-peel or chip black laminated vinyl; durable and permanent. Interior - attractive, NSF approved, white aluminum interior liner with stainless steel floor. Self closing doors. Counter-balanced weight system for smooth, even, positive closing. "Low-E", double pane thermal insulated glass door assemblies with mitered plastic channel frames. The latest in energy efficient technology. LED interior lighting provides more even lighting throughout the cabinet. Safety shielded. Entire cabinet structure is foamed-in-place using a high density, polyurethane insulation that has zero ozone depletion potential (ODP) and zero global warming potential (GWP).



True

Pratts
FOOD SERVICE
A Family Company Since 1910

TRUE



**TRUE FREEZER
2 DR GLASS
(GDM-49F-HC-TSL01)
WHITE**
1/49cft #315192
Web Price: \$7,146.59
Loyalty Points
Value: 1748
YOUR PRICE: \$

lease 36 month term
"taxes extra"
\$213.26

Rent 52 week term
"taxes extra"
\$62.29

49 cubic foot two section glass door merchandiser freezer comes with 8 adjustable vinyl-coated shelves. Two triple pane thermal glass self-closing doors enhances product visibility while simultaneously reducing energy loss. A 1 1/2 hp bottom mounted compressor holds a consistent temperature of -10 degrees. This bottom mount design raises the level of the bottom shelf to better display your products. Easy to clean laminated exterior cabinet. Easy maintenance and energy efficiency comes with a NEMA14-20P plug, and requires a 115/208-230V electrical connection. It is UL, CE, and NSF Listed. 58 1/8" W x 29 7/8" D x 78 5/8" H.

Glass Door Freezer Merchandisers

**TRUE FREEZER 3 DR GLASS
(GDM-72F-HC-TSL01) WHITE**

1/each #337279
Web Price: \$10,367.64

Loyalty Points
Value: 1949
YOUR PRICE: \$

lease 36 month term
"taxes extra"
\$332.55

Rent 52 week term
"taxes extra"
\$97.13

Increase impulse sales of your most popular popsicles, ice creams, and other frozen treats with the True GDM-72F-LD white glass door merchandiser freezer! This glass door merchandiser freezer features bright and even LED lighting to showcase your products more vividly than fluorescent lights. To maintain the ideal temperature of -10 degrees Fahrenheit, this glass door merchandiser features a 1 1/2 hp compressor, foamed-in-place polyurethane insulation, and triple-pane thermal insulated glass doors. And thanks to its spacious three-section design, you can pack this merchandiser freezer full of your best-selling products.



**TRUE FREEZER
1 DR GLASS
(GDM-23F-HC-LD)
WHITE**

1/each - #491126
Web Price: \$5,164.29

Loyalty Points
Value: 925
YOUR PRICE: \$

lease 36 month term
"taxes extra"
\$167.44

Rent 52 week term
"taxes extra"
\$48.90

23 cubic foot glass door merchandiser freezer comes with adjustable vinyl-coated shelves. A 3/4 hp bottom mount compressor holds a -10 degrees Triple pane thermal glass self-closing door enhances product visibility while simultaneously reducing energy loss. Easy to clean laminated exterior cabinet. 27" W x 29 7/8" D x 78 5/8" H. Energy efficiency requires a 115V electrical connection, and is UL, CE, and NSF Listed.

Pratts

FOOD SERVICE

A Family Company Since 1910

Stainless Steel Upright Refrigeration/Cooler

All prices exclude delivery and of course, taxes. If you want it delivered, we'd be happy to but we're gonna need a little bit of gas money, call us for a fair quote.

TRUE COOLER 1 DR (T-19) S/S FRONT

1/19cft - #311480
Web Price: \$2,525.88
Loyalty Points Value: 559
YOUR PRICE: \$

lease 36 month term
taxes extra
\$77.69

Rent 52 week term
taxes extra
\$22.69

3 adjustable, heavy-duty, vinyl-coated wire shelves, door locks and casters. Self-closing door with lifetime-guaranteed door hinges Closure system recessed door handles. Hold temperatures between 33 degrees and 38 degrees. Exterior consists of a 300-series stainless steel front and anodized aluminum ends. Interior is NSF-approved, white, vinyl-coated aluminum and a 300-series stainless steel floor, 2 1/2" casters. It also has an exterior temperature monitor. Overall dimensions are 27" W x 24 1/2" D x 75 1/4" H, which does not include 5" for the casters.



TRUE COOLER 2 DR S/S (T-49) S/S FRONT

1/49cft - #311464
Web Price: \$4,210.58
Loyalty Points Value: 832
YOUR PRICE: \$

lease 36 month term
taxes extra
\$133.47

Rent 52 week term
taxes extra
\$38.98

This two door reach-in refrigerator contains 6 adjustable, heavy-duty, vinyl-coated wire shelves, door locks and casters. The door is self-closing with lifetime-guaranteed door hinges and torsion-type closure system. It also has a lifetime guarantee on the recessed door handles. It uses a bottom-mounted, oversized, balanced, (134A) refrigeration system to hold temperatures between 33 degrees Fahrenheit and 38 degrees Fahrenheit. The exterior consists of a 300-series stainless steel front and anodized aluminum ends. The interior is NSF-approved, white, vinyl-coated aluminum and a 300-series stainless steel floor. Also has an exterior temperature monitor. Overall dimensions for this unit are 54" W x 29 1/2" D x 78 1/4" H, which does not include 5" for the casters.



TRUE COOLER (T-23G-LD)

1/each - #409250
Web Price:
\$3,690.71
Loyalty Points
Value: 1142
YOUR PRICE: \$

lease 36 month term
taxes extra
\$100.68

Rent 52 week term
taxes extra
\$29.41

True's solid door reach-in's are designed with enduring quality that protects your long term investment. Designed using the highest quality materials and components to provide the user with colder product temperatures, lower utility costs, exceptional food safety and the best value in today's food service marketplace. Factory engineered, self-contained, capillary tube system using environmentally friendly R290 hydro carbon refrigerant that has zero (0) ozone depletion potential (ODP), & three (3) global warming potential (GWP). High capacity, factory balanced refrigeration system that maintains cabinet temperatures of 33°F to 38°F (.5°C to 3.3°C) for the best in food preservation. Stainless steel solid door and front. Adjustable, heavy duty PVC coated shelves. Positive seal self-closing door. Bottom mounted units feature "No stoop" lower shelf. Storage on top of cabinet.



True

Pratts

FOOD SERVICE

A Family Company Since 1910

Stainless Steel Upright Freezer

All prices exclude delivery and of course, taxes. If you want it delivered, we'd be happy to but we're gonna need a little bit of gas money, call us for a fair quote.

TRUE FREEZER 1 DR (T-19F) S/S FRONT

1/each - #311498
Web Pric: \$2,781.63
Loyalty Points Value: 513
YOUR PRICE: \$

lease 36 month term
"taxes extra"
\$89.62

Rent 52 week term
"taxes extra"
\$26.17

3 adjustable, heavy-duty, white, vinyl-coated wire shelves. Refrigeration system to reach a temperature of -10 degrees Fahrenheit. Large evaporator coil that permits a short defrost cycle. Interior lighting. The exterior stainless steel front and aluminum-finished ends, back, and top. The interior is NSF-approved, white, vinyl-coated aluminum and has a 300-series stainless steel floor. Comes with door lock, an exterior-mounted temperature monitor, and 2 1/2" casters. The overall dimensions for this 19 cubic foot unit are 27" W x 24 1/2" D x 78" H. Height does not include casters.



TRUE FREEZER 1 DR (T-23F-HC) S/S FRONT

1/each - #453670
Web Pric: \$3,977.61
Loyalty Points Value: 779
YOUR PRICE: \$

lease 36 month term
"taxes extra"
\$126.36

Rent 52 week term
"taxes extra"
\$36.91



True's solid door reach-in's are designed with enduring quality that protects your long term investment. Designed using the highest quality materials and ponents to provide the user with colder product temperatures, lower utility costs, exceptional food safety and the best value in today's food service marketplace. Extra large evaporator coil balanced with higher horsepower compressor and large condenser maintains -10°F (-23.3°C) cabinet Temperatures. Ideally suited for both frozen foods and ice cream. Stainless steel solid door and front. The very finest stainless with higher tensile strength for fewer dents and scratches. Adjustable, heavy duty PVC coated shelves. Positive seal self-closing door. Lifetime guaranteed door hinges and torsion type Closure system. Automatic defrost system time-initiated, temperature-terminated. Saves energy consumption and provides shortest possible defrost cycle.

True

Pratts
FOOD SERVICE
A Family Company Since 1910

TRUE FREEZER 2 DR (T-49F) S/S FRONT

1/each - #311472
Web Pric: \$5,510.25
Loyalty Points Value: 1121
YOUR PRICE: \$

lease 36 month term
"taxes extra"
\$173.36

Rent 52 week term
"taxes extra"
\$50.64

True's solid door reach-in's are designed with enduring quality that protects your long term investment. Designed using the highest quality materials and components to provide the user with colder product temperatures, lower utility costs, exceptional food safety and the best value in today's food service marketplace. Factory engineered, self-contained, capillary tube system using environmentally friendly R290 hydro carbon refrigerant that has zero (0) ozone depletion potential (ODP), & three (3) global warming potential (GWP). High capacity, factory balanced refrigeration system that maintains -10°F (-23.3°C) temperatures. Ideal for both frozen foods and ice cream. Stainless steel solid doors and front. The very finest stainless with higher tensile strength for fewer dents and scratches. stable, heavy duty PVC coated shelves. Positive seal self-closing doors. Lifetime guaranteed door hinges and torsion type closure system. Automatic defrost system time-initiated, temperature-terminated. Saves energy consumption and provides shortest possible defrost cycle. Bottom mounted units feature: "No stoop" lower shelf. Storage on top of cabinet. Compressor performs in coolest, most grease free area of kitchen. Easily accessible condenser coil for cleaning.



lease 36 month term
"taxes extra"
\$163.49

TRUE FREEZER 2 DR (T-43F-HC) S/S FRONT

1/each - #237107
Web Pric: \$5,180.10
Loyalty Points Value: 1041
YOUR PRICE: \$

Rent 52 week term
"taxes extra"
\$47.75

True's solid door reach-in's are designed with enduring quality that protects your long term investment. Designed using the highest quality materials and components to provide the user with colder product temperatures, lower utility costs, exceptional food safety and the best value in today's food service marketplace. Extra large evaporator coil balanced with higher horsepower compressor and large condenser maintains -10°F (-23.3°C) cabinet temperatures. Ideally suited for both frozen foods and ice cream. Stainless steel solid doors and front. The finest stainless available with higher tensile strength for fewer dents and scratches. Adjustable, heavy duty PVC coated shelves. Positive seal self-closing doors. Lifetime guaranteed door hinges and torsion type closure system. Automatic defrost system time-initiated, temperature-terminated. Saves energy consumption and provides shortest possible defrost



Stainless Steel Pizza Tables



TRUE PIZZA TABLE (TPP-60)

1/each - #311449
Web Price: \$5,109.42

Loyalty Points Value: 1060
YOUR PRICE: \$

lease 36 month term
"taxes extra"
\$159.93

Rent 52 week term
"taxes extra"
\$46.71

True's pizza prep tables are designed with enduring quality that protects your long term investment. Oversized, environmentally friendly (R134A) forced-air refrigeration system holds 33°F to 41°F (.5°C to 5°C). Complies with and listed under ANSI/NSF-7. All stainless steel front, top and ends. Matching aluminum finished back. Stainless steel, patented, foam insulated flat lids keep pan temperatures colder, lock in freshness, and minimize condensation. Interior - attractive, NSF approved, clear coated aluminum liner. Stainless steel floor with coved corners. Extra-deep 19 1/2" (496 mm) full length removable cutting board included. Sanitary, high density, NSF approved white polyethylene provides tough preparation surface. Heavy duty PVC coated wire shelves. Foamed-in-place using a high density, polyurethane insulation that has zero ozone depletion potential (ODP) and zero global warming potential (GWP).

TRUE PIZZA TABLE (TPP-44)

1/each - #491092 - Web Price: \$3,998.54

Loyalty Points Value: 1000
YOUR PRICE: \$



lease 36 month term
"taxes extra"
\$118.46

Rent 52 week term
"taxes extra"
\$34.60

True's pizza prep tables are designed with enduring quality that protects your long term investment. Oversized, environmentally friendly (R134A) forced-air refrigeration system holds 33°F to 41°F (.5°C to 5°C). Complies with and listed under ANSI/NSF-7. All stainless steel front, top and ends. Matching aluminum finished back. Stainless steel, patented, foam insulated flat lid keeps pan temperatures colder, locks in freshness, and minimizes condensation. Extra-deep 19 1/2" (496 mm) full length removable cutting board included. Sanitary, high density, NSF approved white polyethylene provides tough preparation surface. Heavy duty PVC coated wire shelves. Foamed-in-place using Ecomate. A high density, polyurethane insulation that has zero ozone depletion potential (ODP) and zero global warming potential (GWP).

TRUE UNDER COUNTER FREEZER

2 DR (TUC-48F) 1/each - #301713

Web Price: \$3,361.02

Loyalty Points Value: 562
YOUR PRICE: \$

lease 36 month term
"taxes extra"
\$110.56

Rent 52 week term
"taxes extra"
\$32.29



Undercounter freezer has two door and 4 adjustable, vinyl-coated, wire shelves. It uses an oversized, environmentally friendly (R404A) refrigeration system to hold a temperature of -10 degrees Fahrenheit. It uses a 360 degree, circular airflow for uniform product cooling. The exterior has a stainless steel top, front and sides, plus an aluminum-finished back. The interior has an NSF-approved, white, vinyl-coated aluminum sides and top, coved corners and a 300-series, stainless steel floor. Front breathing, is a self-contained unit and has 5" casters. Its overall dimensions are 48 3/8" W x 31 1/8" D x 36" H.

Stainless Steel Preparation Tables

**TRUE PREP SAND
(TSSU-48-12) 12 PAN**
1/12cft - #346627
Web Price: \$3,383.81
Loyalty Points Value: 785
YOUR PRICE: \$

lease 36 month term
"taxes extra"
\$102.66

Rent 52 week term
"taxes extra"
\$29.98



TSSU-48-12 sandwich / salad prep refrigerator unit has 2 doors and 4 adjustable, vinyl-coated wire shelves. The True TSSU-48-12 uses an oversized (134A) refrigeration system with air flow directed at the pans, to ensure colder temperatures. It holds temperatures between 33 degrees and 41 degrees. The front, top, and sides of the TSSU-48-12 are stainless steel and the back has an aluminum finish. A stainless steel, foam-insulated cover to keep pans colder. The interior has NSF-approved, white vinyl-coated aluminum sides and top, coved corners and a stainless steel floor. 11 3/4" wide, full-length, removable cutting board. It has (1/6 size) 6" x 6" x 4" deep polycarbonate insert pans included. It can also accommodate 6" and 8" deep pans. 48 3/8"W x 30 1/8"D x 36 3/4"H, and it comes with 5" casters. Height does not include castors.

TRUE

**TRUE PREP SAND
(TSSU-60-16) 16 PAN**
1/15.5cft - #413286
Web Price: \$3,674.43
Loyalty Points Value: 585
YOUR PRICE: \$

lease 36 month term
"taxes extra"
\$122.01

Rent 52 week term
"taxes extra"
\$35.64

Prep refrigerator unit has 2 doors and 4 adjustable, vinyl-coated wire shelves. Refrigeration system with air flow directed at the pans, to ensure colder temperatures. It Holds temperatures between 33 and 41 Fahrenheit. The front, top, and sides are stainless steel and the back has an aluminum finish. It has a stainless steel, foam insulated cover to keep pans colder. The interior has NSF-approved, white vinyl-coated aluminum sides and top, corners and a stainless steel floor. 11 3/4" wide, full-length, removable cutting board. It has (1/6 size) 6" x 6" x 4", clear, polycarbonate insert pans included. It can also accommodate 6" and 8" deep pans. The overall size is 60 3/8"W x 30 1/8"D x 46 3/4"H, and it comes with 5" casters. Height does not include casters.



Pratts
FOOD SERVICE
A Family Company • Since 1910

TRUE

All prices exclude delivery and of course, taxes. If you want it delivered, we'd be happy to but we're gonna need a little bit of gas money, call us for a fair quote.

Approximate rate, taxes extra & weekly payment

Stainless Steel Preparation Tables

TRUE PREP SAND (TSSU-27-08) 27.6" 8 PANS

1/each - #491316
 Web Price: \$2,177.60
Loyalty Points Value: 419
YOUR PRICE: \$

lease 36 month term
 "taxes extra"
 \$69.48

Rent 52 week term
 "taxes extra"
 \$20.29

Streamline preparation of all your signature salads and sandwiches with this 1 door prep refrigerator! This unit boasts an 11 3/4" deep polyethylene cutting board for plenty of prep space, and it is also removable for easy cleaning. Its refrigerated top section comes standard with (8) 1/6 size, 4" deep pans to house all of your most-used ingredients, and to lock in freshness when not in use, this model also features a foam insulated lid and hood. (2) adjustable PVC coated wire shelves let you easily organize other ingredients in the refrigerated cabinet. Exterior: stainless steel front, top, and ends; aluminum finished back Interior: white aluminum liner; stainless steel floor with covered corners for easy cleaning Top will hold pans up to 8" deep



TRUE PREP SAND (TSSU-60-08) 60.3" 8 PANS

1/each - #104570
 Web Price: \$3,530.75
Loyalty Points Value: 692
YOUR PRICE: \$

lease 36 month term
 "taxes extra"
 \$112.14

Rent 52 week term
 "taxes extra"
 \$32.75



True's salad/sandwich units are designed with enduring quality that protects your long term investment. Oversized, environmentally friendly (134A), patented forced-air refrigeration system holds 33°F to 41°F (.5°C to 5°C). Complies with and listed under ANSI/NSF-7. All stainless steel front, top and ends. Matching aluminum finished back. Stainless steel, patented, foam insulated lid and hood keep pan temperatures colder, lock in freshness and minimize condensation. Removable for easy cleaning. Interior - attractive, NSF approved, clear coated aluminum liner. Stainless steel floor with covered corners. 113/4" (299 mm) deep, 1/2" (13 mm) thick, full length removable cutting board included. Sanitary, high density, NSF approved white polyethylene provides tough preparation surface. Heavy duty PVC coated wire shelves. Foamed-in-place using Ecomate. A high density, polyurethane insulation that has zero ozone depletion potential (ODP) and zero global warming potential (GWP).

Pratts
 FOOD SERVICE
 A Family Company Since 1910

True

Stainless Steel Preparation Tables

TRUE PREP MEGA (TSSU-60-12M-B) 60.3" 12 PANS

1/each - #491381
Web Price: \$4,210.11
Loyalty Points Value: 861
YOUR PRICE: \$

lease 36 month term
"taxes extra"
\$132.28

Rent 52 week term
"taxes extra"
\$38.64



TRUE PREP SAND (TSSU-72-18) 72.3" 18 PAN

1/each - #491324
Web Price: \$4,215.69
Loyalty Points Value: 827
YOUR PRICE: \$

lease 36 month term
"taxes extra"
\$133.86

Rent 52 week term
"taxes extra"
\$39.10



True's salad/sandwich units are designed with enduring quality that protects your long term investment. Oversized, environmentally friendly (134A), patented forced-air refrigeration system holds 33°F to 41°F (.5°C to 5°C). Complies with and listed under ANSI/NSF-7. All stainless steel front, top and ends. Matching aluminum finished back. Stainless steel, patented, foam insulated lid and hood keep pan temperatures colder, lock in freshness and minimize condensation. Removable for easy cleaning. Interior - attractive, NSF approved, clear coated aluminum liner. Stainless steel floor with coved corners. 1 1/4" (299 mm) deep, 1/2" (13 mm) thick, full length removable cutting board included. Sanitary, high density, NSF approved white polyethylene provides tough preparation surface. Heavy duty PVC coated wire shelves. Foamed-in-place using Ecomate. A high density, polyurethane insulation that has zero ozone depletion potential (ODP) and zero global warming potential (GWP).

Streamline preparation of all your signature salads and sandwiches with this True TSSU-72-18 3 door prep refrigerator! This unit boasts an 11 3/4" deep polyethylene cutting board for plenty of prep space, and it is also removable for easy cleaning. Its refrigerated top section comes standard with (18) 1/6 size, 4" deep pans to house all of your most-used ingredients, and to lock in freshness when not in use, this model also features a foam insulated lid and hood. (6) adjustable PVC coated wire shelves let you easily organize other ingredients in the refrigerated cabinet. Please consult the Specification Sheet for additional details. Exterior: stainless steel front, top, and ends; aluminum finished back Interior: white aluminum liner; stainless steel floor with coved corners for easy cleaning Top will hold pans up to 8" deep (3) swing doors Oversized, factory balanced refrigeration system provides uniform temperature control and years of reliable service, 1/2 hp compressor, R-134A refrigerant and foamed-in-place polyurethane insulation maintain 33 to 41 degrees Fahrenheit, 5" casters, UL, NSF, and CE Listed; 115V, comes with 7' cord and NEMA 5-15P plug.

Pratts

FOOD SERVICE

A Family Company  Since 1910

Stainless Steel Preparation Tables

**TRUE PREP SAND
(TSSU-72-30M-B-ST)**
1/each - #156331
Web Price: \$4,911.33
Loyalty Points Value: 982
YOUR PRICE: \$

lease 36 month term
"taxes extra"
\$155.19

Rent 52 week term
"taxes extra"
\$45.33

True's salad/sandwich units are designed with enduring quality that protects your long term investment. Oversized, environmentally friendly (134A), patented forced-air refrigeration system holds 33°F to 41°F (.5°C to 5°C). Complies with and listed under ANSI/NSF-7. All stainless steel front, top and ends. Matching aluminum finished back. Stainless steel, patented, foam insulated lids and hoods keep pan temperatures colder, lock in freshness and minimize condensation. Removable for easy cleaning. Interior - attractive, NSF approved, clear coated aluminum liner. Stainless steel floor with coved corners. 87/8" (226 mm) deep, 1/2" (13 mm) thick, full length removable cutting board included. Sanitary, high density, NSF approved white polyethylene provides tough preparation surface. Heavy duty PVC coated wire shelves. Foamed-in-place using a high density, polyurethane insulation that has zero ozone depletion potential (ODP) and zero global warming potential (GWP).



**TRUE WORK TABLE
(TWT-72)**
1/each - #173807
Web Price: \$3,708.38
Loyalty Points Value: 719
YOUR PRICE: \$

lease 36 month term
"taxes extra"
\$118.06

Rent 52 week term
"taxes extra"
\$136.21

True's worktop units are designed with enduring quality that protects your long term investment. Designed using the highest quality materials and components to provide the user with colder product temperatures, lower utility costs, exceptional food safety and the best value in today's food service marketplace. Oversized, environmentally friendly (134A) forced-air refrigeration system holds 33°F to 38°F (.5°C to 3.3°C). All stainless steel front, top and ends. Matching aluminum finished back. Top and backsplash are one piece formed construction. Bacteria and food particles cannot be trapped underneath as with other two-piece worktop units. Interior - attractive, NSF approved, clear coated aluminum liner. Stainless steel floor with coved corners. Front breathing. Heavy duty PVC coated wire shelves. Foamed-in-place using Ecomate. A high density, polyurethane insulation that has zero ozone depletion potential (ODP) and zero global warming potential (GWP).



Underbar Refrigeration

TRUE GLASS CHILLER (T-36-GC)

1/each - #325100
 Web Price: \$2,592.38
 Loyalty Points Value: 473
 YOUR PRICE: \$

lease 36 month term
 "taxes extra"
 \$83.70

Rent 52 week term
 "taxes extra"
 \$24.44



True

Pratts

FOOD SERVICE

A Family Company Since 1910

True's glass and plate chiller/frosters are designed with enduring quality and value. Our commitment to using the highest quality materials and oversized refrigeration assures colder product temperatures and years of trouble free service. Large storage capacity to meet the supply and demand requirements during peak hours. Oversized, factory balanced, refrigeration system holds 0°F (-17.7°C) and below. Forced-air cooling, positively guided airflow provide efficient balanced temperatures throughout the cabinet. This unique design ensures fast frosting of dry glasses and plates. Exterior - heavy duty, wear resistant laminated black vinyl front and sides, matching black aluminum back. All stainless steel countertop and lids. Interior - long lasting, heavy duty galvanized steel.

TRUE DRAFT 2DR (TDD-2) 59" BLACK

1/each - #491332
 Web Price: \$3,257.33
 Loyalty Points Value: 618
 YOUR PRICE: \$

lease 36 month term
 "taxes extra"
 \$104.24

Rent 52 week term
 "taxes extra"
 \$30.44



True's direct draw beer dispensers are designed with enduring quality and value. Our commitment to using the highest quality materials and oversized refrigeration assures colder product temperatures and years of trouble free service. Oversized, factory balanced, refrigeration system holds 33°F to 38°F (.5°C to 3.3°C). Exterior - heavy duty, wear resistant laminated black vinyl front and sides. Matching black aluminum back. All stainless steel counter top. Interior - Stainless steel floor with 1/2" (13 mm) reinforced lip and heavy gauge galvanized steel walls. NSF-7 approved for packaged and bottled product. Two (2) 3" (77 mm) diameter stainless steel insulated beer columns. Cold air is directed into beer columns to reduce foaming and maximize draft beer profits. Entire cabinet structure and solid doors are foamed-in-place using Ecomate. A high density, polyurethane insulation that has zero ozone depletion potential (ODP) and zero global warming potential (GWP).

True



Warehouse Sale

Buy Rent Lease

We do it all!!

Pricing Effective:
February 24th - March 24th, 2017
(Or While Qty's Last)

Bar Refrigeration

TRUE B/BAR (TBB-3G-LD) GLASS DOORS

1/each - #144360
Web Price: \$3,515.40
Loyalty Points Value: 1106
YOUR PRICE: \$

lease 36 month term
taxes extra
\$95.15

Rent 52 week term
taxes extra
\$27.79

Oversized, factory balanced, refrigeration system holds 33°F to 38°F (.5°C to 3.3°C). Exterior - all stainless steel countertop, heavy duty, wear resistant laminated black vinyl front and sides. Matching black aluminum back. Interior - Stainless steel floor with 1/2" (13 mm) reinforced lip and heavy gauge galvanized steel walls. NSF-7 approved for packaged and bottled product. Positive seal doors. "Low-E", double pane thermal glass door assemblies with extruded aluminum frames. The latest in energy efficient technology. LED interior lighting provides more even lighting throughout the cabinet. Safety shielded. "Low-E", double pane thermal glass door assemblies with extruded aluminum frames. The latest in energy efficient technology. Each door fitted with 12" (305 mm) long handle. Positive seal doors. Magnetic door gaskets of one piece construction, removable without tools for ease of cleaning. Door locks standard. Four (4) adjustable, heavy duty, black PVC coated wire shelves 313/4" L x 211/4" D (807 mm x 540 mm). Four (4) chrome plated shelf clips included per shelf.



TRUE B/BAR (TBB-2G-LD) GLASS DOORS

1/each - #399931
Web Price: \$3,366.14
Loyalty Points Value: 637
YOUR PRICE: \$

lease 36 month term
taxes extra
\$107.79

Rent 52 week term
taxes extra
\$31.48

True's refrigerated back bar coolers are designed with enduring quality and value. Our commitment to using the highest quality materials and oversized refrigeration assures colder product temperatures and years of trouble free service. Oversized, factory balanced, refrigeration system holds 33°F to 38°F (.5°C to 3.3°C). Exterior - all stainless steel countertop, heavy duty, wear resistant laminated black vinyl front and sides. Matching black aluminum back. Interior - Stainless steel floor with 1/2" (13 mm) reinforced lip and heavy gauge galvanized steel walls. NSF-7 approved for packaged and bottled product. Positive seal doors. "Low-E", double pane thermal glass door assemblies with extruded aluminum frames. The latest in energy efficient technology. LED interior lighting provides more even lighting throughout the cabinet. Safety shielded. Entire cabinet structure is foamed-in-place using Ecomate. A high density, polyurethane insulation that has zero ozone depletion potential (ODP) and zero global warming potential (GWP).



Pratts

FOOD SERVICE

A Family Company Since 1910

Pricing In Effect For Goods
Delivered On Or Before March 24th, 2017

Pricing Subject to Availability - No Rain Checks
Once Stock is out, re-orders MAY NOT be at advertised prices.
All Pricing Subject to Change

Manitoba Food Service: Order Desk (204) 949-2832 - Fax (204) 949-4700 - 101 Hutchings Street - Winnipeg, Manitoba - R2X 2V4

Manitoba Retail: Order Desk (204) 949-2818 - Fax (204) 949-2828 - 101 Hutchings Street - Winnipeg, Manitoba - R2X 2V4

Saskatchewan Food Service: Order Desk (306) 546-5444 - Fax (306) 546-5555 - 1450 Park Street - Regina, SK - S4N 2G2

Alberta Food Service: Order Desk (403) 476-7728 - Fax (403) 452-8031 - 291196 Wagon Wheel Rd. - Rocky View County, Alberta - T4A 0E2

ALBERTA • SASKATCHEWAN • MANITOBA • NW ONTARIO • THUNDER BAY • NUNAVUT • NW TERRITORIES • YUKON TERRITORIES